

**CHURCH
FOR SALE**

Property Highlights

Built in 1953
200 Seat Sanctuary
40+ Expandable Car
Parking
Kitchen
Fellowship Hall
Baptismal Font
3 Offices
4 Class rooms
Foyer
Cry Room
280 sq ft detached
garage

Size

Multi Level 2 stories

Main level 3,140 sq ft
Lower Level 3,140 sq ft
Total Bldg 6,280 sq ft
Paved Parking 24,000 sq ft

Land 1.36 acres

Presented by:

Cheryl Meglio
"The Church Lady"
Mobile 314-498-5555
Cheryl@MeglioRealtyGroup.com
www.ChurchLady.org



10714 Trenton Ave
Saint Louis, MO 63132
Office: 314-429-3900
www.MeglioRealtyGroup.com

FOR SALE \$495,000

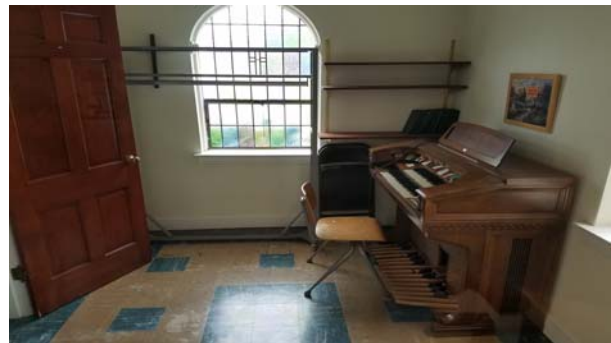
200 Harding Ave, Maryland Heights, MO 63043



Beautiful 200 seat Church with pew seating. Located just minutes east of 270 off Dorsett / Midland. This must see beauty has foyer, cry room, offices, classrooms and a fellowship / kitchen. This is the perfect move up church in Maryland Heights with paved asphalt expandable 40+ car parking. There is a 14 by 20 ft detached garage for storage behind the church.

Access to the parking can be from Reading Ave. or Harding Ave. Take 270 to Dorsett go east to left on Reading Ave, The Church is on the corner of Reading and Harding. You can also take Lindbergh to Midland and go west on Midland to right on Reading. Schedule your appointment today this one won't last long.

FOR SALE \$495,000
200 Harding Ave, Maryland Heights, MO 63043



Presented by:
Cheryl Meglio
"The Church Lady"
Mobile 314-498-5555
Cheryl@MeglioRealtyGroup.com
www.ChurchLady.org



10714 Trenton Ave
Saint Louis, MO 63132
Office: 314-429-3900
www.MeglioRealtyGroup.com

FOR SALE \$495,000
200 Harding Ave, Maryland Heights, MO 63043



Presented by:
Cheryl Meglio
"The Church Lady"
Mobile 314-498-5555
Cheryl@MeglioRealtyGroup.com
www.ChurchLady.org

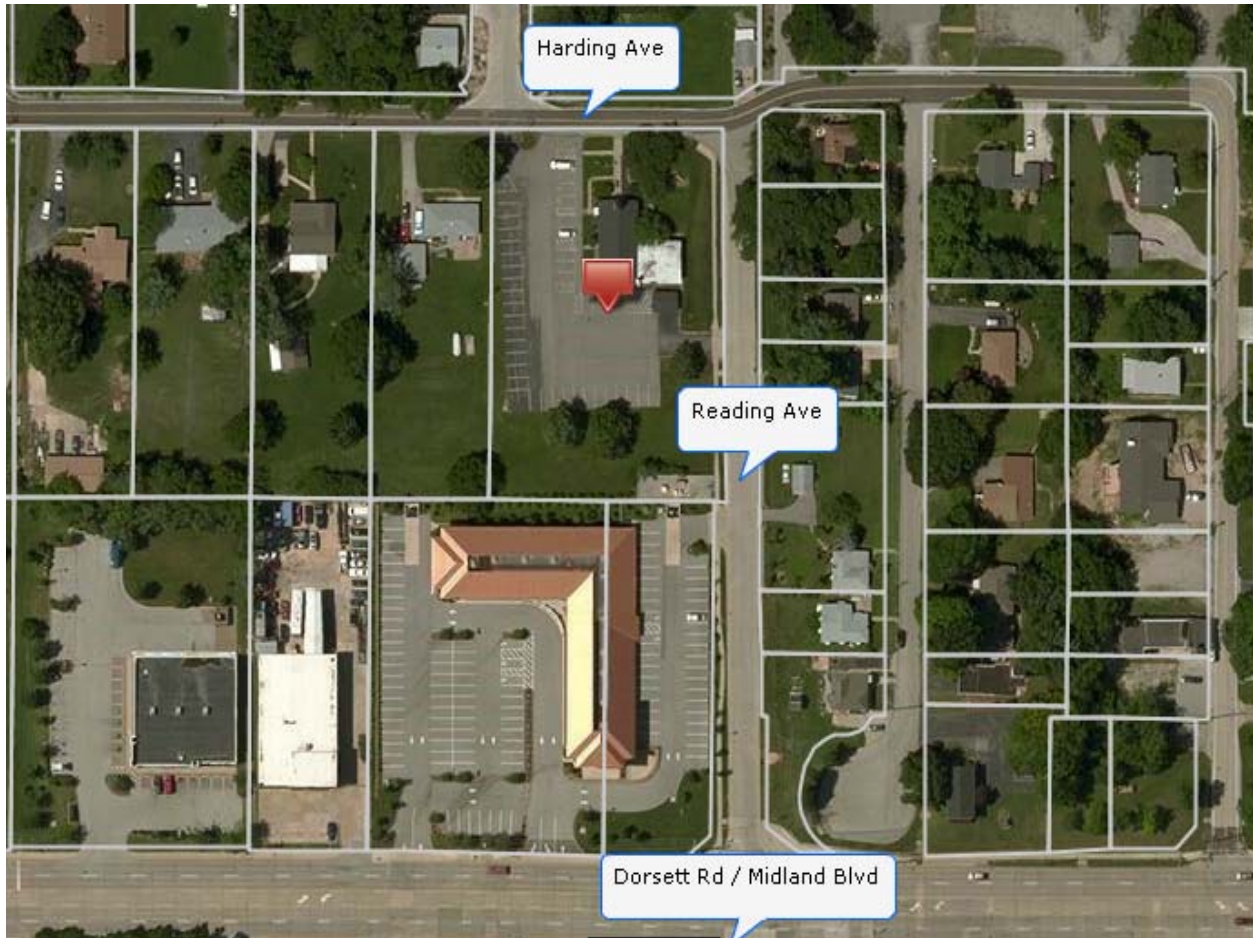


10714 Trenton Ave
Saint Louis, MO 63132
Office: 314-429-3900
www.MeglioRealtyGroup.com



FOR SALE \$495,000

200 Harding Ave, Maryland Heights, MO 63043



Presented by:

Cheryl Meglio
"The Church Lady"
Mobile 314-498-5555
Cheryl@MeglioRealtyGroup.com
www.ChurchLady.org



10714 Trenton Ave
Saint Louis, MO 63132
Office: 314-429-3900
www.MeglioRealtyGroup.com

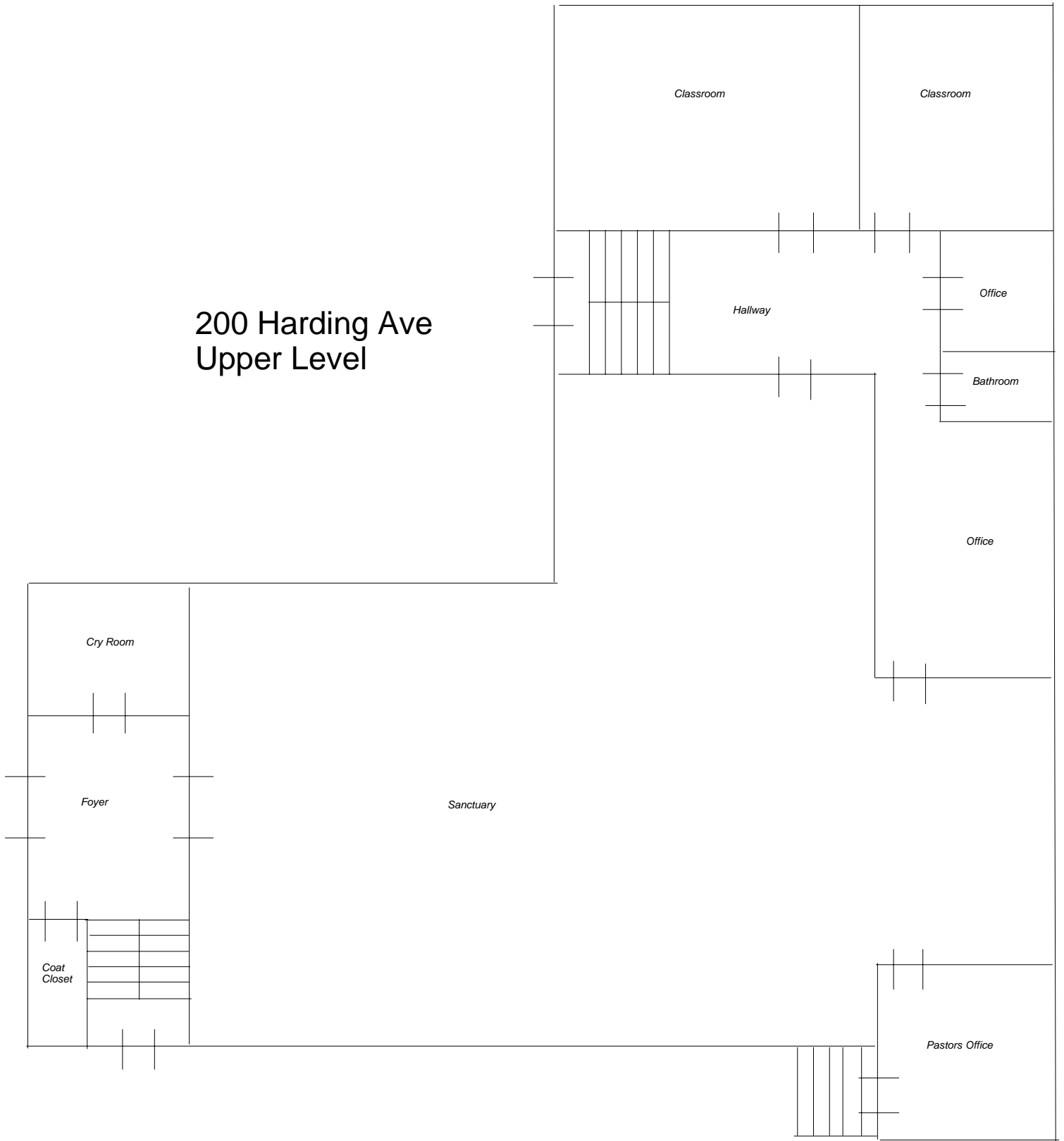
Directions

Interstate 270 to Dorsett Rd exit, take Dorsett east to Reading Ave, Church will be on the corner of Reading and Harding.

Or

Take Lindbergh Blvd to Midland Blvd exit and go west towards 270. Turn right on Reading Ave Church will be on corner of Reading and Harding.

200 Harding Ave Upper Level



200 Harding Ave Lower Level

